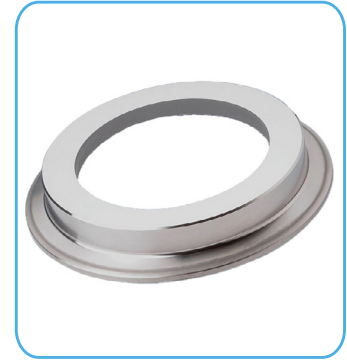
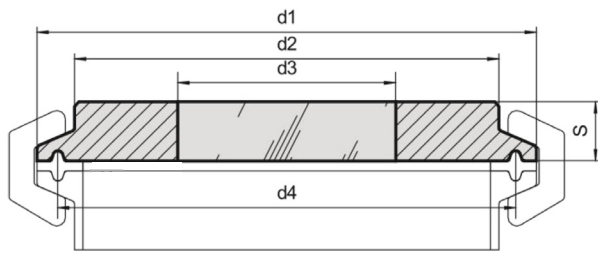


SPM

Flat sight glass

Metal Fused type for clamp fittings



	DN Nominal Diameter			d1	d2		d3		d4	S		P. Max bar
	DIN	ISO	BS4825		SV	LV	SV	LV		SV	LV	
075	-	8/10	1/2" - 3/4"	25	18	-	10	-	18	10	-	16
075C	10/15/20	-	-	34	23	-	14	-	27.5	8	-	16
150	25/32/40	15/20/25	1" - 1 1/2"	50.5	41	41	25	30	43.5	10	10	16
200	50	32/40	2"	64	52	52	30	37	56.5	10	12	16
250	-	50	2 1/2"	77.5	63.5	63.5	35	45	70.5	12	14	16
300	65	65	3"	91	76	76	40	55	83.5	10	14	10
350	80	80	3 1/2"	106	90	90	50	60	97	10	15	10
400	100	-	4"	119	101	102.5	55	75	110	12	18	10
450	-	100	4 1/2"	130	114	-	60	-	122	16	-	10
500A	-	-	5"	144.5	127	-	65	-	134.5	16	-	10
500C	125	-	5"-1/2"	155	138	-	70	-	146	16	-	6
600A	-	-	6"	167	152	152	75	105	156.5	16	22	6
600C	150	150	-	183	160	-	80	-	174.3	16	-	6
800A	-	-	8"	217.5	198	198	100	135	207.4	18	24	6
800C	200	200	-	233.5	210	-	100	-	225.1	18	-	6
A10A	-	-	10"	268	245	245	130	160	257.8	20	25	6
A10C	250	-	-	287.5	266	-	140	-	278.4	22	-	6
A12A	-	-	12"	319.3	300	300	150	200	309.1	22	30	6
A12C	300	300	-	338.3	316	-	150	-	328.4	22	-	6

Standard view version (SV)

Ring material: 1.4462

Borosilicate Glass to DIN 7080 / DIN 7079

Temperature: -30°C +280°C

Pressure: -1 to 6 / 10 / 16 bar (see table)

Triclamp connection for fittings according to:

ASME BPE - BS 4825 - DIN 32676 - ISO 2852

Large view version (LV)

Ring material: 1.4462

Sodalime glass DIN 8902 / DIN 7079

(limited usable for pressure vessels)

Temperature: -10°C +150°C

Pressure: -1 to 6 / 10 / 16 bar (see table)

Triclamp connection for fittings according to:

ASME BPE - BS 4825 - DIN 32676 - ISO 2852

Advantages :

- Extremely compact construction
- Aseptic design
- Security against total fail
- Fast, simple installation and maintenance
- Long operating time

DATASHEETS



Last updates can be found on our website - www.aerreinox.it

In the interests of development of the product, we reserve the right to change the specifications without prior notice